

DL-S 30-130/T plus-EN54

- bass-reflex
- shallow installation depth
- magnetic grille



EN 54-24:2008

Ref. Nr.: 024-15

ID-Code: SAA-LS15

1438-CPR-1089

ic audio GmbH, Boehringerstraße 14a,
D-68307 Mannheim, Germany

CE-Symbol gemäß Richtlinie 93/68EWG

With a low-profile design, the DL-S voice alarm loudspeaker series, certified EN 54-24, blends seamlessly into any environment.

With a powerful 2-way bass-reflex system and an impressive 30W, the DL-S 30 sets new standards for clear and powerful sound. The 130mm woofer of high-quality polypropylene and the precise 25mm tweeter guarantee excellent music reproduction.

The loudspeaker offers a wide dispersion behaviour, filling the room with exceptional sound. Connection options are convenient via the screw terminal with IN-OUT for loop connections, while power adjustments via a rotary switch enable individual sound customisation.

This speaker offers the flexibility of low-impedance operation, allowing it to be optimised for different requirements. The magnetic grille and screw mounting system simplify installation and ensure an elegant appearance.

The speaker's housing, made of high-quality ABS plastic, not only promises long-lasting performance but also blends aesthetically into any environment.

Technical Data (Electrical)

Description	DL-S 30-130/T plus-EN54
Power	30/15/7.5/3.75 (8) W
Impedance (100V)	333/667/1333/2666 ohm
Frequency Range	70 - 20.500 Hz
Frequency Response	60 - 21.000 Hz
SPL IEC268-5, 1W/1m	92,3 dB
SPL EN54-24, Pmax/4m	92,0 dB
Sensitivity EN54-24, 1W/4m	77,3 dB
Sensitivity EN54-24, 1W/1m	89,3 dB
Dispersion -6dB, 500Hz	h/v 180°/180°
Dispersion -6dB, 1KHz	h/v 165°/165°
Dispersion -6dB, 2KHz	h/v 145°/170°
Dispersion -6dB, 4KHz	h/v 75°/60°

Technical Data (Mechanical)

Dimensions	320x128 mm
IP Rating	IP21
Weight (net)	2,3 kg
Ceiling Cut-out	291 mm
Temperature Range	-10 / +55 C°
Mounting	screw system
Connector	6-pin screw terminal
Colour	RAL 9016

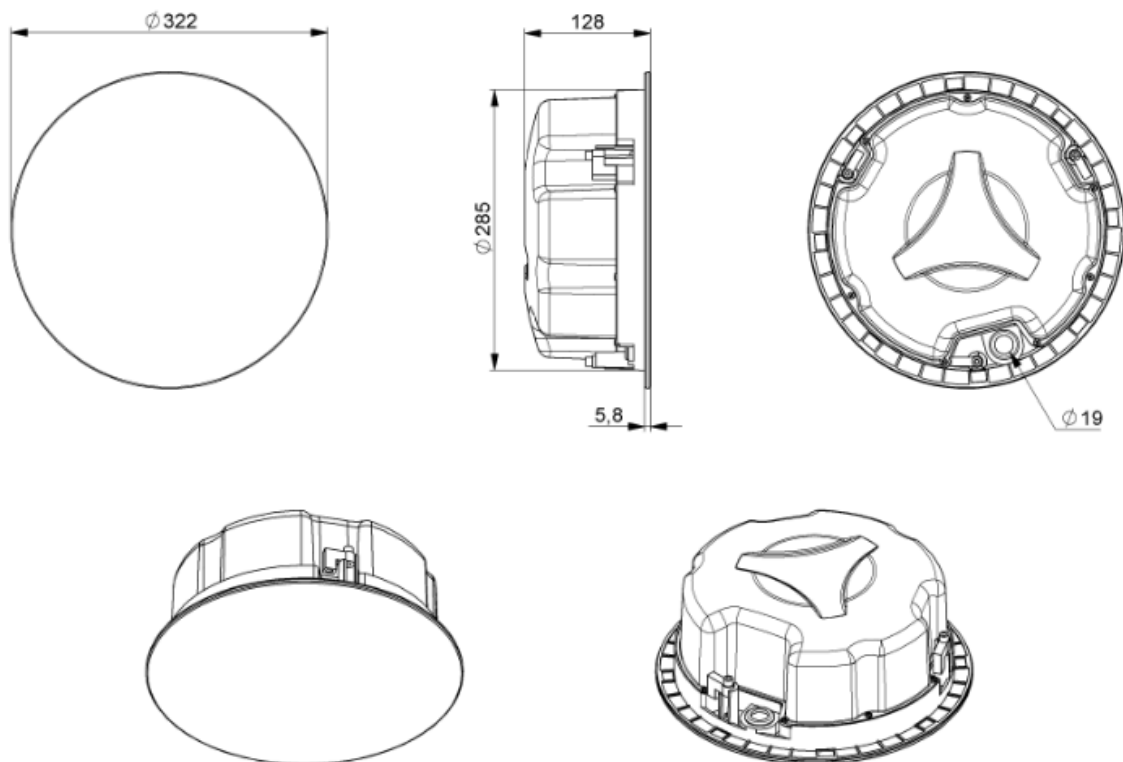
Product Attributes



Technical Drawing



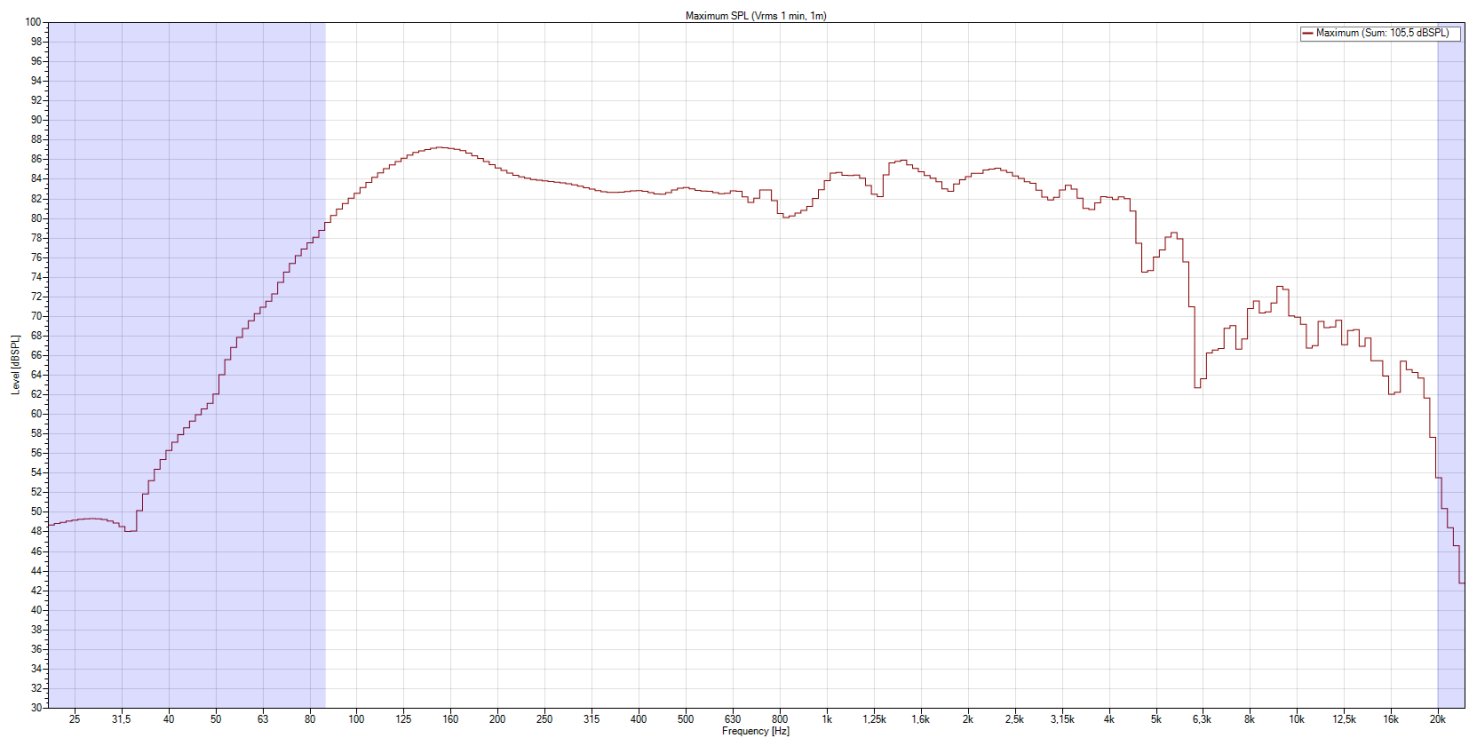
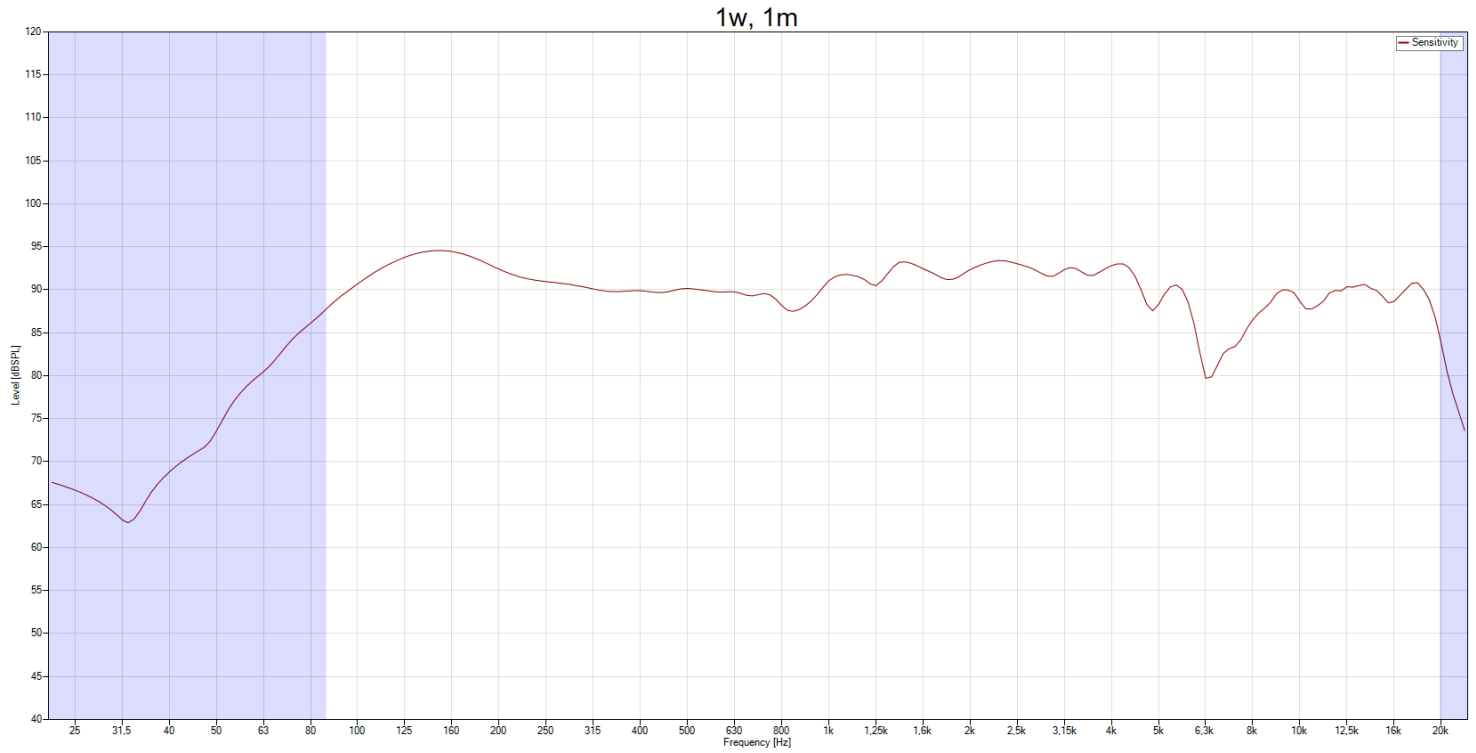
DL-S 30-130/T plus-EN54



all dimensions are in mm

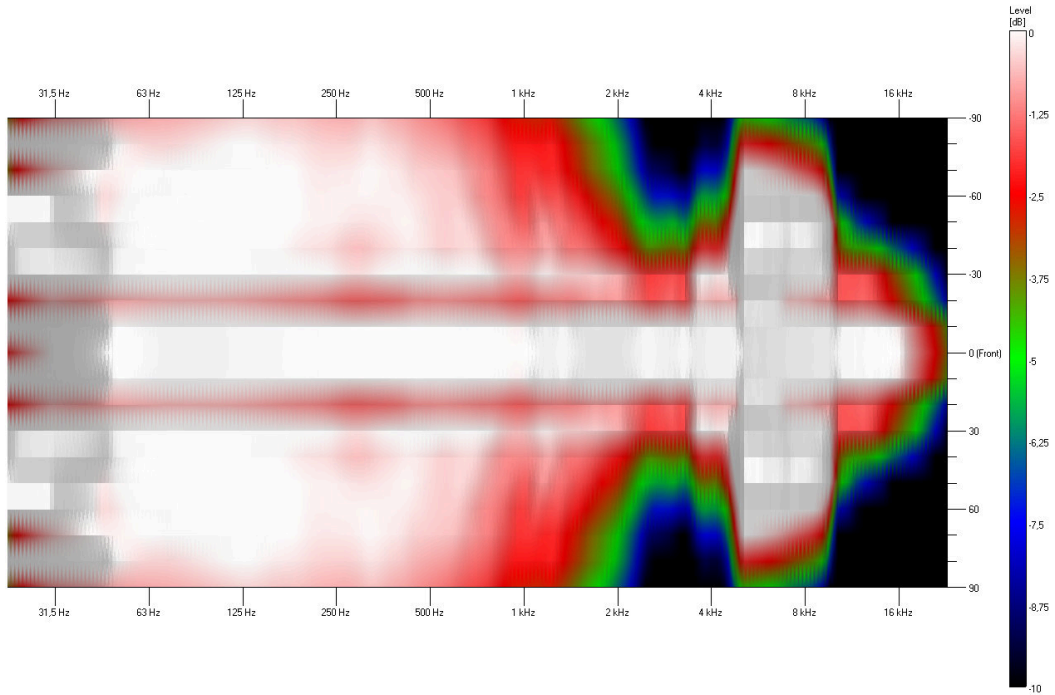
Frequency Response Diagram

Sensitivity

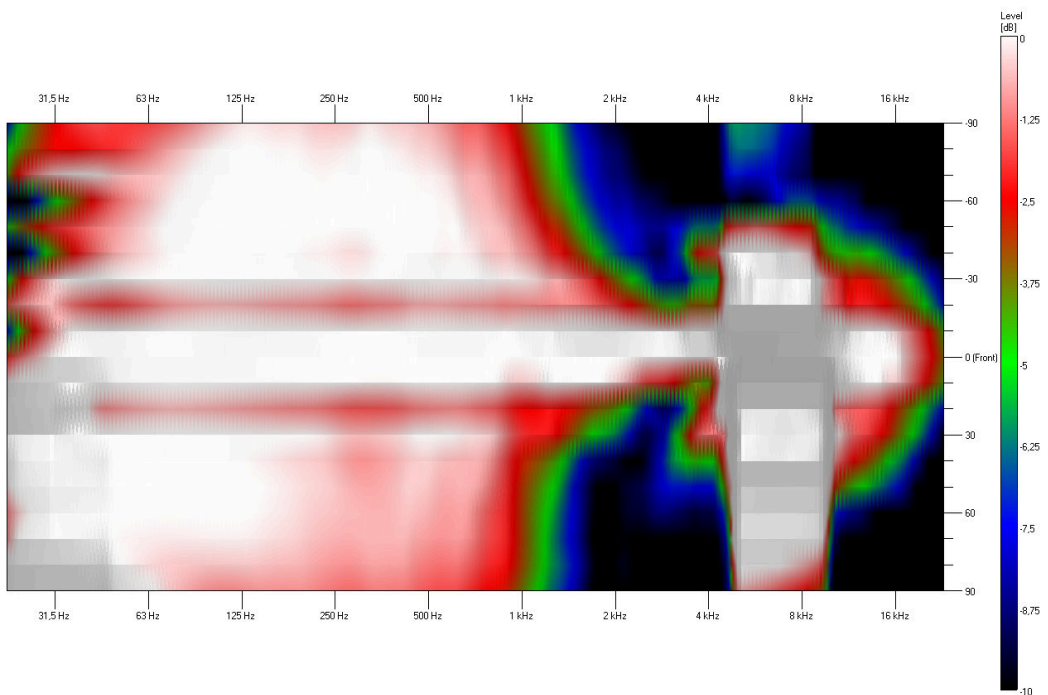


Isobar

Horizontal

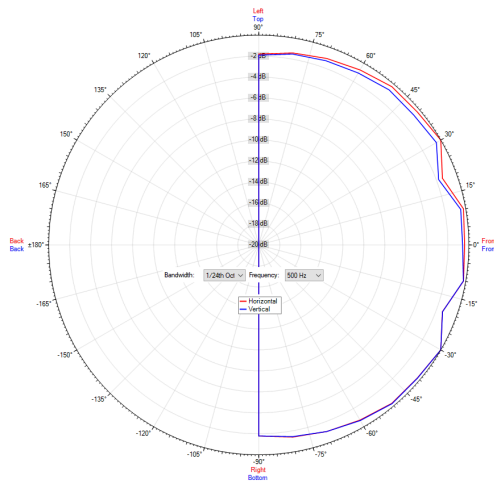


Vertical

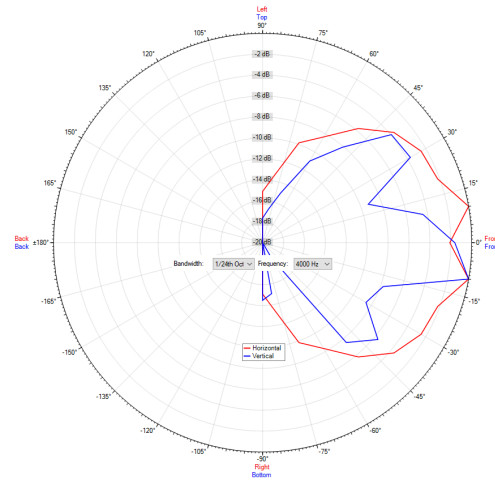


Polar Diagram

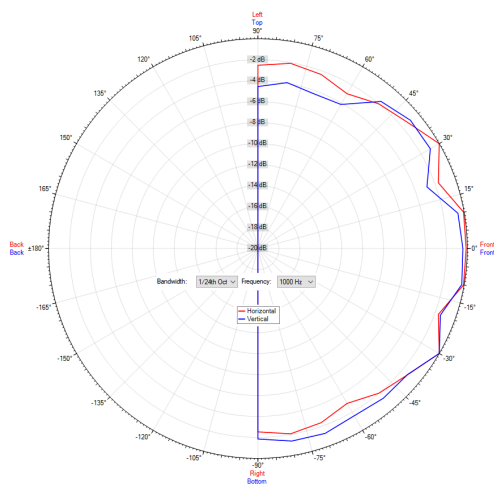
Polar Diagram 500Hz



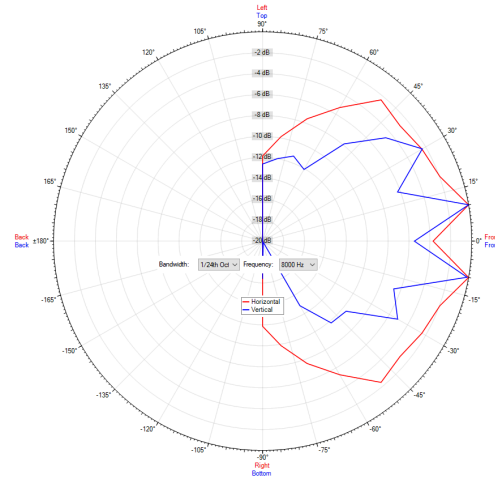
Polar Diagram 4000Hz



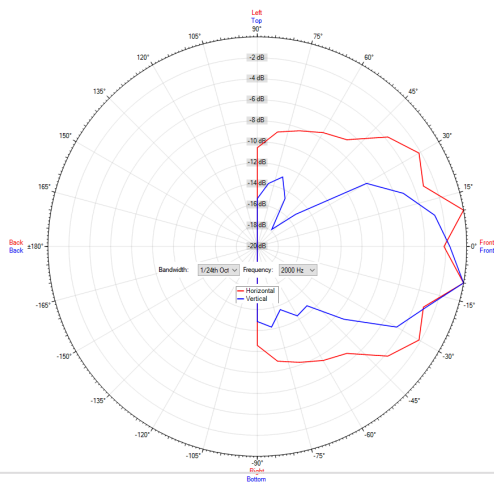
Polar Diagram 1000Hz



Polar Diagram 8000Hz



Polar Diagram 2000Hz



ic audio loudspeakers are tested and classified according to the IEC standard 60529 (degree of protection by enclosure) against the penetration of foreign objects and moisture. The classification is conforming to standards through characterization with a fixed code. This code consists of the letters IP (International Protection) followed by two digits. The first digit indicates the degree of protection against dust and the second digit the degree of protection against water. Please note that the testing of the products has been carried out in laboratory conditions which are not always 100% comparable with the conditions of different installation environments. This protection can be reduced due to normal wear and tear depending on the installation environment.

RoHS compliant (2011/65/EU)

The IP rating specified is based on ic audio test results, not on CNBOP-PIB test results. Certification only verifies the minimum requirements for EN54-24 compliance.



Article Nr.: 20238243
Packing Unit: 8

